

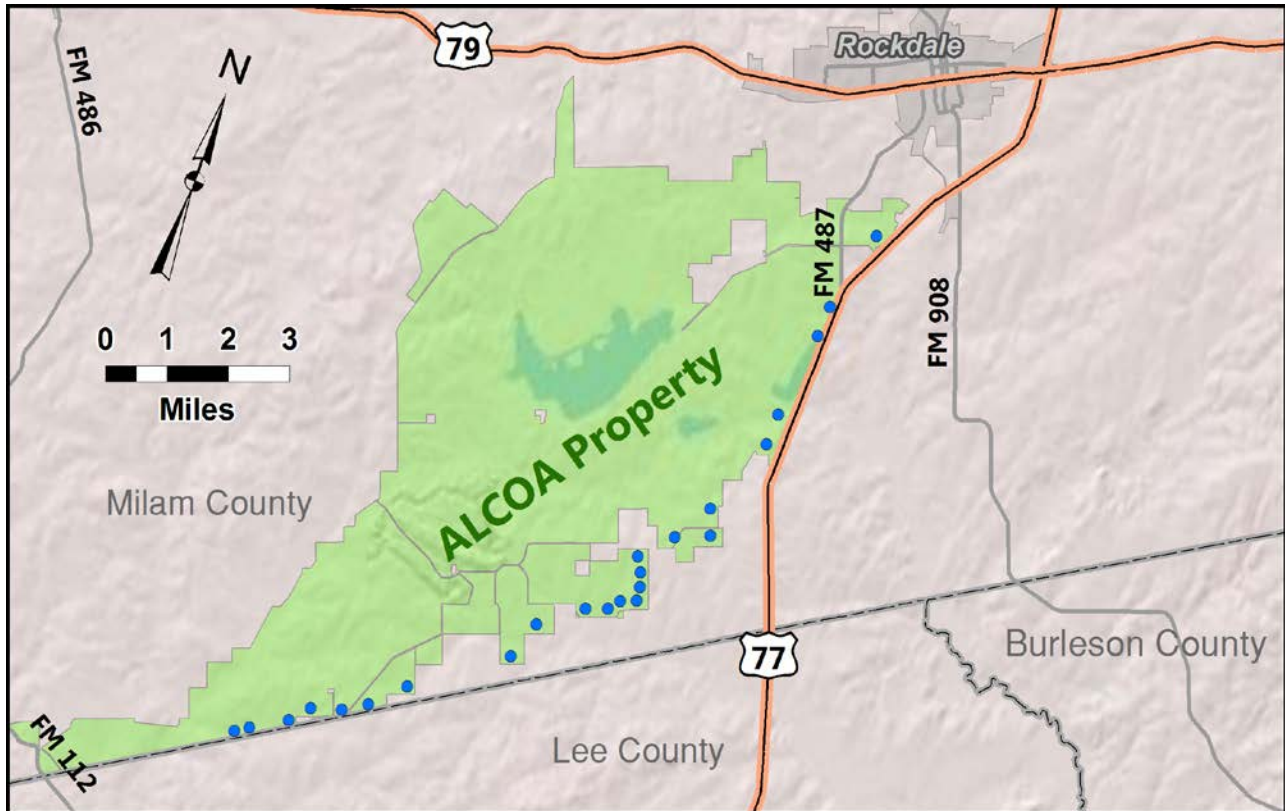
NOTICE OF A PUBLIC HEARING
POST OAK SAVANNAH GROUNDWATER CONSERVATION DISTRICT
TUESDAY, AUGUST 14, 2012, 5:30 P.M.
Post Oak-Savannah Groundwater Conservation District Offices
310 East Avenue C
Milano, Texas 76556

The Board of Directors of the Post Oak Savannah Groundwater Conservation District will hold a public hearing in the Post Oak-Savannah Groundwater Conservation District Offices, 310 East Avenue C, Milano, Texas 76556, on Tuesday, August 14, 2012, at 5:30 P.M., for the purpose of receiving public comments on the following applications for amendments to existing permits.

Notice is hereby given of the following public hearing that will be held at the time and place listed above on the following applications, to-wit:

Drilling and Operation Permits. Aluminum Company of America, whose address is P.O. Box 1491, Rockdale, TX 76567, submitted applications on March 13, 2012, for Drilling and Operating Permits to produce 25,000 acre feet of water for Industrial use. The application seeks authorization to enable ALCOA to produce the water from 32 of 60 historic use wells and authority to drill and produce water from new wells OP-1 through OP-24. For a map and description of the proposed locations of wells OP-1 through OP-24 please see the following map and descriptions.

The map printed below shows the proposed location of the new wells:



The field notes, maps and full request related to the above referenced applications and public hearings are available for inspection, review and copying at Post Oak Savannah Groundwater Conservation District offices, located at 310 East Avenue C, Milano, Texas. Persons wishing to be heard as a potential party to the hearing must notify the General Manager in writing at least five (5) days before the hearing at 310 East Avenue C, Milano, Texas 76556. A copy of the documents and application are available to the public during office hours from 8:00 a.m. until 4:00 p.m., Monday through Friday.

Well Locations

Well Number	Directions
OP-1	Begin at the intersection of FM 487 and US Hwy. 77 and then go North 4,100 feet on FM 487 to a dirt road and then go right 2,800

Well Number	Directions
OP-2	<p>feet to the well site.</p> <p>Begin at the intersection of FM 487 and US Hwy. 77 and then go Southwest 3,800 feet on US Hwy.77 to a dirt road and then go Right 275 feet to a dead end and then go Right 3,070 feet along a dirt road and then go 320 feet East to the well site.</p>
OP-3	<p>Begin at the intersection of FM 487 and US Hwy. 77 and then go Southwest 3,800 feet on US Hwy.77 to a dirt road and then go Right 275 feet to a dead end and then go 430 feet North to the well site.</p>
OP-4	<p>Begin at the intersection of FM 487 and US Hwy. 77 and then go Southwest 1.9 miles on US Hwy.77 to a dirt road and then go Right 390 feet to a dead end and then go 840 feet North-Northwest to the well site.</p>
OP-5	<p>Begin at the intersection of FM 487 and US Hwy. 77 and then go Southwest 1.9 miles on US Hwy.77 to a dirt road and then go Right 390 feet to a dead end and then go left 2,500 along a dirt road and then go 650 feet North to the well site.</p>
OP-6	<p>Begin at the intersection of FM 487 and US Hwy. 77 and then go Southwest 3.4 miles on US Hwy.77 to CR 313 and then go Right 3,800 feet on CR 313 and then go 1,380 feet North to the well site.</p>
OP-7	<p>Begin at the intersection of FM 487 and US Hwy. 77 and then go Southwest 3.4 miles on US Hwy.77 to CR 313 and then go Right 1 mile on CR 313 and then go 800 feet South to the well site.</p>
OP-8	<p>Begin at the intersection of FM 487 and US Hwy. 77 and then go Southwest 3.4 miles on US Hwy.77 to CR 313 and then go Right 1.35 mile on CR 313 and then go 200 feet West to the well site.</p>
OP-9	<p>Begin at the intersection of FM 487 and US Hwy. 77 and then go Southwest 3.4 miles on US Hwy.77 to CR 313 and then go Right 2 miles on CR 313 and then go 725 feet South to the well site.</p>
OP-10	<p>Begin at the intersection of FM 487 and US Hwy. 77 and then go Southwest 3,800 feet on US Hwy.77 to CR 313 and then go Right 2.1 miles on CR 313 and then go 2,050 feet South to the well site.</p>
OP-11	<p>Begin at the intersection of FM 487 and US Hwy. 77 and then go Southwest 1.9 miles on US Hwy.77 to CR 313 and then go Right 2.2 miles on CR 313 and then go 0.6 miles South to the well site.</p>

Well Number	Directions
OP-12	Begin at the intersection of FM 487 and US Hwy. 77 and then go Southwest 1.9 miles on US Hwy.77 to CR 313 and then go Right 2.3 miles on CR 313 and then go 0.8 miles South to the well site.
OP-13	Begin at the intersection of FM 487 and US Hwy. 77 and then go Southwest 1.9 miles on US Hwy.77 to CR 313 and then go Right 2.3 miles on CR 313 and then go 0.75 miles South-Southwest to the well site.
OP-14	Begin at the intersection of FM 487 and US Hwy. 77 and then go Southwest 3.4 miles on US Hwy.77 to CR 313 and then go Right 2.3 miles on CR 313 and then go 0.9 miles South-Southwest to the well site.
OP-15	Begin at the intersection of FM 487 and US Hwy. 77 and then go Southwest 3.4 miles on US Hwy.77 to CR 313 and then go Right 2.3 miles on CR 313 and then go 1mile Southwest to the well site.
OP-16	Begin at the intersection of FM 487 and US Hwy. 77 and then go Southwest 3.4 miles on US Hwy.77 to CR 313 and then go Right 4.3 miles on CR 313 and then go Left at the fork on to CR 312 for 1 mile and then go 3.000 feet East to the well site.
OP-17	Begin at the intersection of FM 487 and US Hwy. 77 and then go Southwest 3.4 miles on US Hwy.77 to CR 313 and then go Right 4.3 miles on CR 313 and then go Left at the fork on to CR 312 for 1.3 miles and then go 940 feet East to the well site.
OP-18	Begin at the intersection of FM 487 and US Hwy. 77 and then go Southwest 3.4 miles on US Hwy.77 to CR 313 and then go Right 4.3 miles on CR 313 and then go Left at the fork on to CR 312 for 1.7 miles and then go Right 1.2 miles on CR 319 and then go 770 feet Northwest to the well site.
OP-19	Begin at the intersection of FM 487 and US Hwy. 77 and then go Southwest 3.4 miles on US Hwy.77 to CR 313 and then go Right 4.3 miles on CR 313 and then go Left at the fork on to CR 312 for 1.7 miles and then go Right 1.2 miles on CR 319 and then go 0.7 miles West to the well site.
OP-20	Begin at the intersection of FM 487 and US Hwy. 77 and then go Southwest 3.4 miles on US Hwy.77 to CR 313 and then go Right 2.3 miles on CR 313 and then go Right at the fork for 0.5 miles and then go Left 3.1 miles along a dirt road and then go 140 feet North

Well Number	Directions
	to the well site.
OP-21	Begin at the intersection of FM 487 and US Hwy. 77 and then go Southwest 3.4 miles on US Hwy.77 to CR 313 and then go Right 4.3 miles on CR 313 and then go Right at the fork for 0.5 miles and then go Left 3.5 miles along a dirt road and then go 450 feet North to the well site.
OP22	Begin at the intersection of FM 487 and US Hwy. 77 and then go Southwest 3.4 miles on US Hwy.77 to CR 313 and then go Right 4.3 miles on CR 313 and then go Right at the fork for 0.5 miles and then go Left 3.5 miles along a dirt road and then go 1,660 feet West to the well site.
OP23	Begin at the intersection of FM 487 and US Hwy. 77 and then go Southwest 3.4 miles on US Hwy.77 to CR 313 and then go Right 4.3 miles on CR 313 and then go Right at the fork for 0.5 miles and then go Left 4.5 miles along a dirt road and then go 0.5 miles North-Northwest to the well site.
OP24	Begin at the intersection of FM 487 and US Hwy. 77 and then go Southwest 3.4 miles on US Hwy.77 to CR 313 and then go Right 4.3 miles on CR 313 and then go Right at the fork for 0.5 miles and then go Left 4.5 miles along a dirt road and then go 0.6 miles Northwest to the well site.